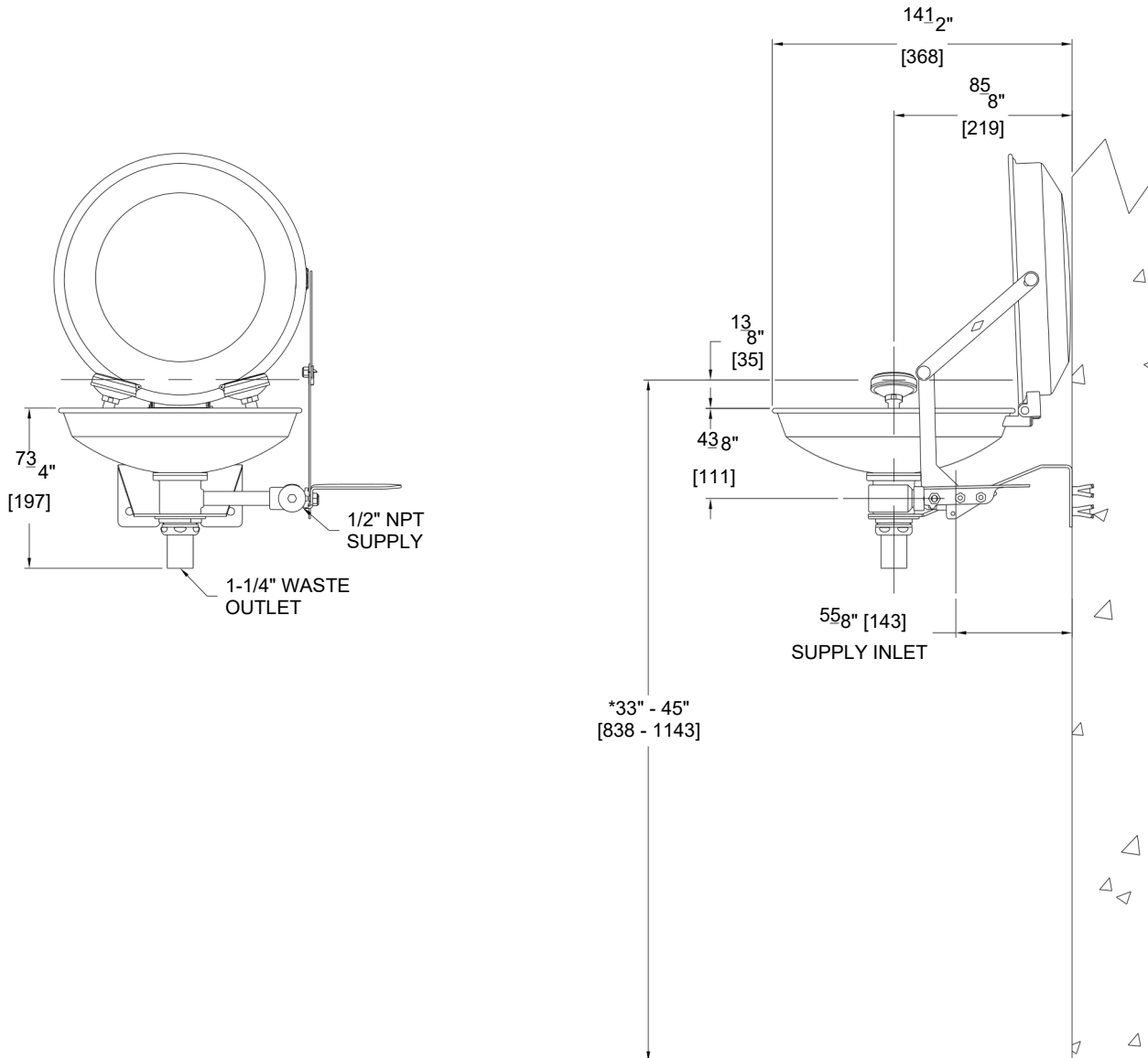


## TECHNICAL DIMENSIONS

All dimensions are subject to manufacturer's tolerance of plus or minus 1/2" nominal and subject to change without notice. Safety Manufacturing assumes no responsibility for use of void or superseded data. Dimensions may change with the addition of optional accessories. © SafetyManufacturing, A Morris Group International Brand. Please visit [www.safetymfg.com](http://www.safetymfg.com) for most current specifications.

0 **Model S0440-CS1** : Wall Mounted Eye/Face Wash, Stainless Steel Bowl with "Clam-Shell" Stainless Steel Cover




GENERAL NOTES: (ANSI Z358.1 STATEMENTS PROVIDED AS REFERENCE ONLY AND SUBJECT TO CHANGE.)

1. ALL DIMENSIONS ARE INCHES [MM].
- \*2. ANSI Z358.1 REQUIRES NOZZLES TO BE MOUNTED BETWEEN 33" - 45" [838 - 1143] ABOVE THE FINISHED FLOOR.
3. ANSI Z358.1 REQUIRES SUPPLY WORKING PRESSURE OF 30 PSI TO 80 PSI.

 **WARNING:** Cancer and Reproductive Harm - [www.P65Warnings.ca.gov](http://www.P65Warnings.ca.gov)

**S0440-CS1** REV: 11/05/2024

<b>SELECTION SUMMARY &amp; APPROVAL FOR MANUFACTURING</b>	Model Number & Options _____	Quantity _____	  <b>800-591-9372</b> <a href="http://www.safetymfg.com">www.safetymfg.com</a>
	Company _____		
	Contact _____	Title _____	
	Signature (Approval for Manufacturing) _____		
	Date _____		