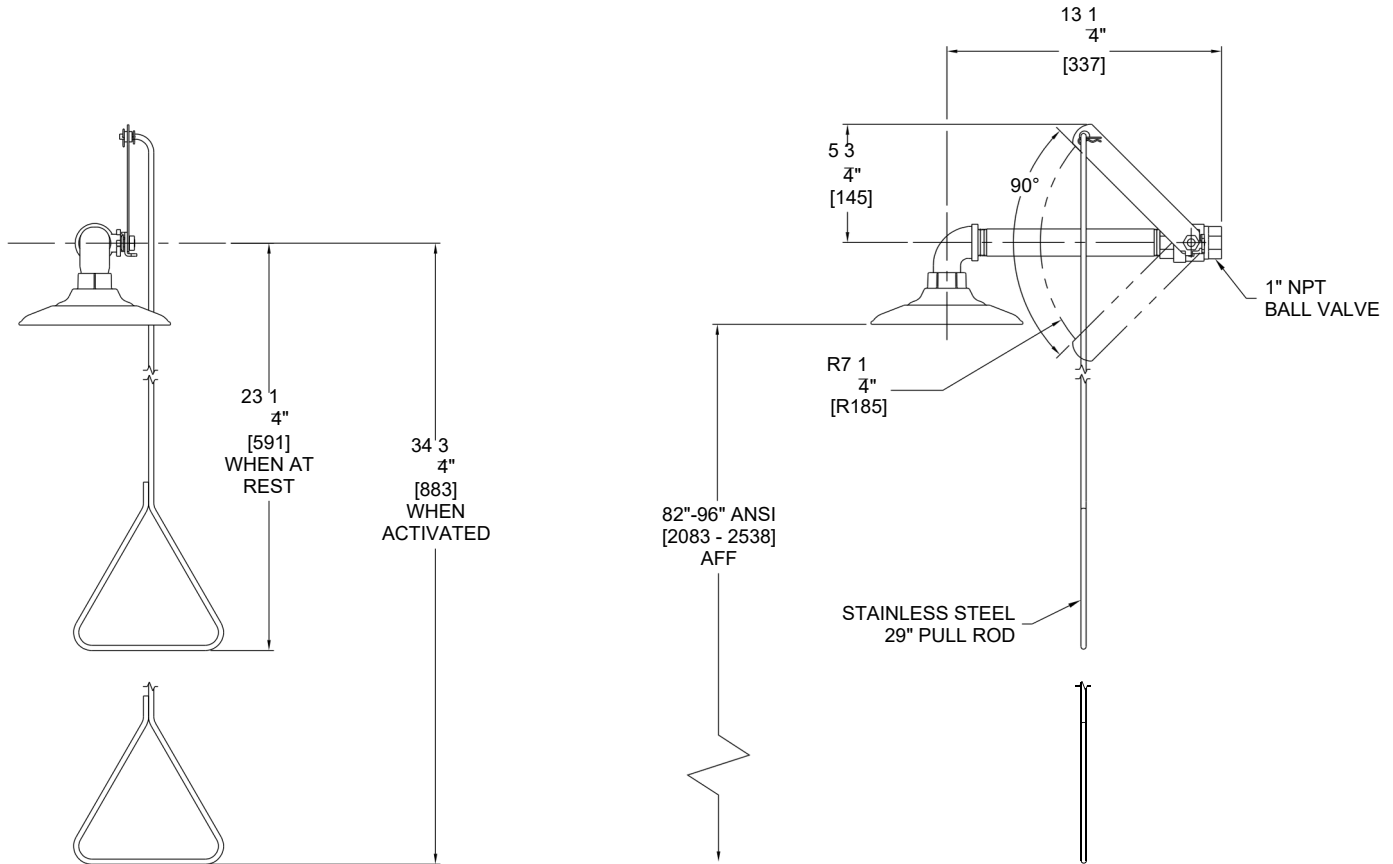


TECHNICAL DIMENSIONS

All dimensions are subject to manufacturer's tolerance of plus or minus 1/2" nominal and subject to change without notice. Safety Manufacturing assumes no responsibility for use of void or superseded data. Dimensions may change with the addition of optional accessories. © SafetyManufacturing, A Morris Group International Brand. Please visit www.safetymfg.com for most current specifications.

Model S1200 : Horizontally Mounted Emergency Shower, Plastic Showerhead



GENERAL NOTES: (ANSI Z358.1 STATEMENTS PROVIDED AS REFERENCE ONLY AND SUBJECT TO CHANGE.)


1. ALL DIMENSIONS ARE INCHES [MM].

*2. ANSI Z358.1 REQUIRES THE SHOWER HEAD TO BE MOUNTED BETWEEN MINIMUM 82" [2083] TO MAXIMUM 96" [2438] ABOVE THE FLOOR.

3. ANSI Z358.1 REQUIRES SUPPLY WORKING PRESSURE OF 30 PSI TO 80 PSI.

 WARNING: Cancer and Reproductive Harm - www.P65Warnings.ca.gov

S1200 REV: 11/01/2024

SELECTION SUMMARY & APPROVAL FOR MANUFACTURING	Model Number & Options _____	Quantity _____	 800-591-9372 www.safetymfg.com
	Company _____		
	Contact _____	Title _____	
	Signature (Approval for Manufacturing) _____		
	Date _____		