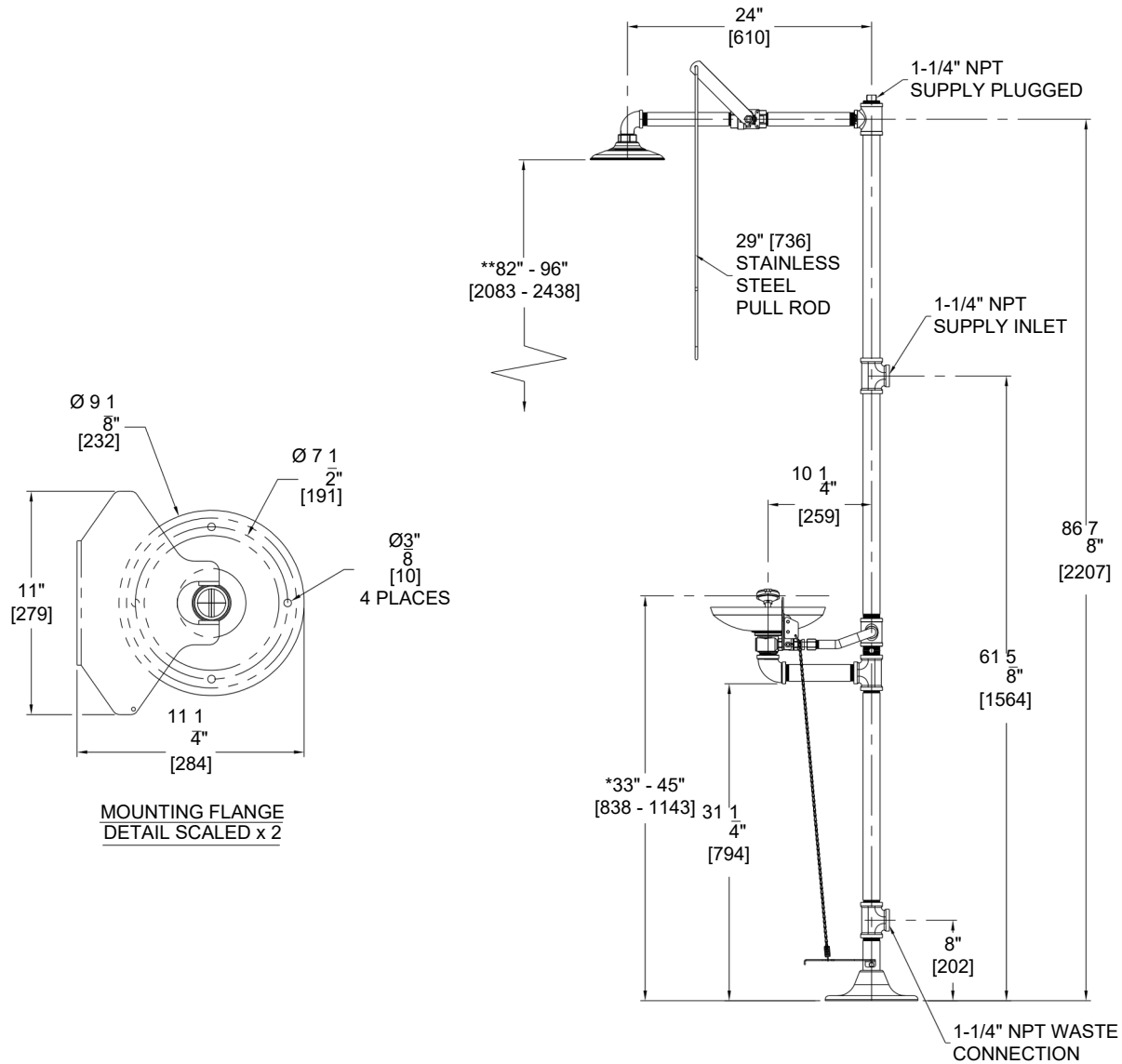


TECHNICAL DIMENSIONS

All dimensions are subject to manufacturer's tolerance of plus or minus 1/2" nominal and subject to change without notice. Safety Manufacturing assumes no responsibility for use of void or superseded data. Dimensions may change with the addition of optional accessories. © SafetyManufacturing, A Morris Group International Brand. Please visit www.safetymfg.com for most current specifications.

Model S1320-HFC : Combination Station, Plastic Bowl Eye/Face Wash and Showerhead, Hand Foot Control



GENERAL NOTES: (ANSI Z358.1 STATEMENTS PROVIDED AS REFERENCE ONLY AND SUBJECT TO CHANGE.)

1. ALL DIMENSIONS ARE IN INCHES [MM].

*2. ANSI Z358.1 REQUIRES NOZZLES TO BE BETWEEN 33" - 45" [838 - 1143] ABOVE THE FINISHED FLOOR.

**3. ANSI Z358.1 REQUIRES THE SHOWER HEAD TO BE MOUNTED BETWEEN 82" - 96" [2083 - 2438] ABOVE THE FINISHED FLOOR WITH A 16" [406] MINIMUM RADIUS UNOBSTRUCTED.

4. ANSI Z358.1 REQUIRES PULL ROD TO BE MOUNTED NO MORE THAN 69" [1752] FROM THE FINISHED FLOOR.

5. ANSI Z358.1 REQUIRES SUPPLY WORKING PRESSURE OF 30 PSI TO 80 PSI.

WARNING: Cancer and Reproductive Harm - www.P65Warnings.ca.gov

S1320-HFC REV: 11/07/2024

SELECTION SUMMARY
& APPROVAL FOR
MANUFACTURING

Model Number & Options _____ Quantity _____

Company _____

Contact _____ Title _____

Signature (Approval for Manufacturing) _____ Date _____



800-591-9372
www.safetymfg.com