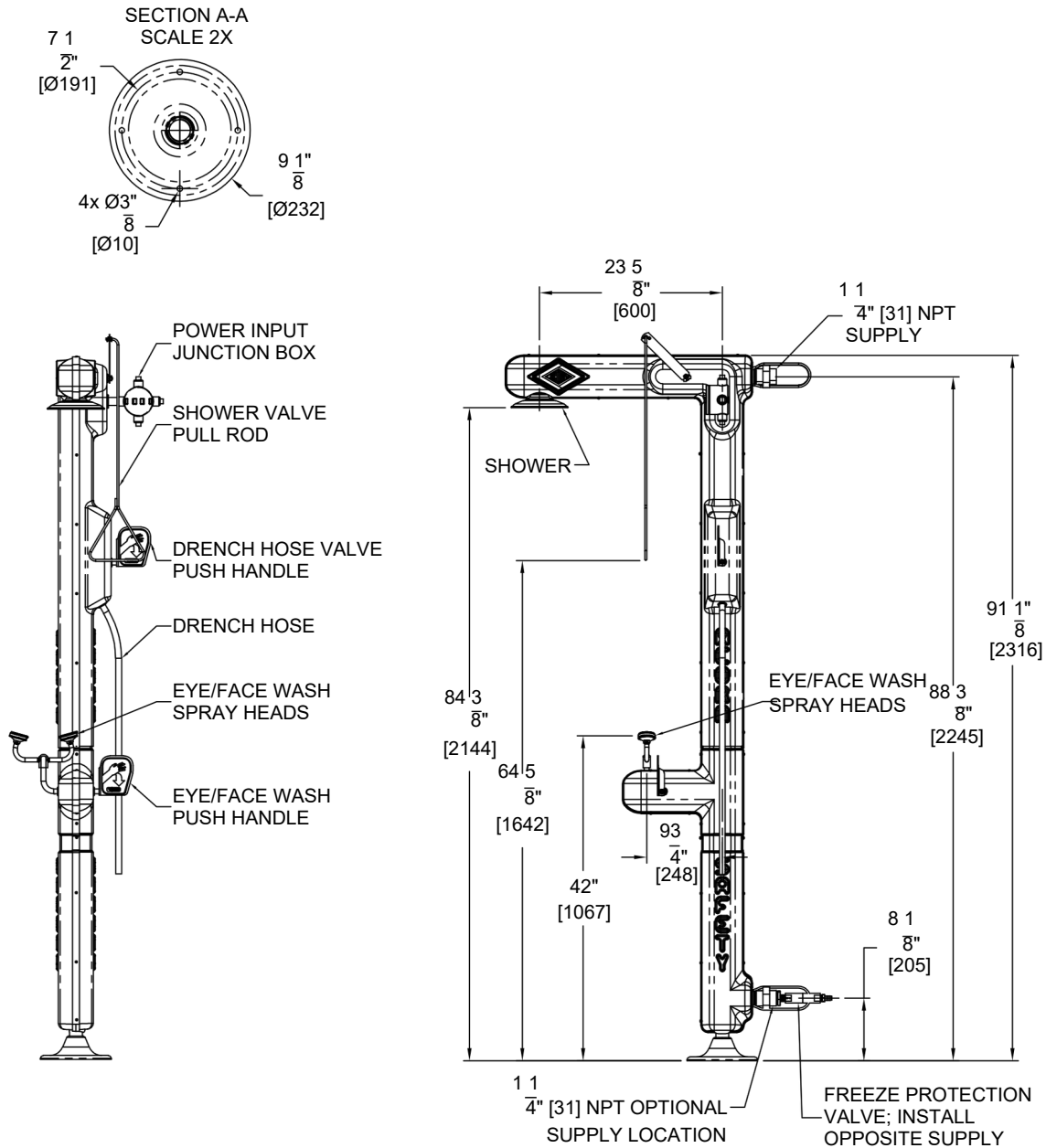


TECHNICAL DIMENSIONS

All dimensions are subject to manufacturer's tolerance of plus or minus 1/2" nominal and subject to change without notice. Safety Manufacturing assumes no responsibility for use of void or superseded data. Dimensions may change with the addition of optional accessories. © SafetyManufacturing, A Morris Group International Brand. Please visit www.safetymfg.com for most current specifications.

Model S1360-HT : Heat Traced Combination Station, Eye/Face Wash, Plastic Showerhead & Drench Hose



GENERAL NOTES: (ANSI Z358.1 STATEMENTS PROVIDED AS REFERENCE ONLY AND SUBJECT TO CHANGE.)

1. ALL DIMENSIONS ARE IN INCHES [MM].
2. ANSI Z358.1 REQUIRES SUPPLY WORKING PRESSURE OF 30 PSI TO 80 PSI.

WARNING: Cancer and Reproductive Harm - www.P65Warnings.ca.gov

S1360-HT REV: 11/01/24

SELECTION SUMMARY
& APPROVAL FOR
MANUFACTURING

Model Number & Options _____ Quantity _____
Company _____
Contact _____ Title _____
Signature (Approval for Manufacturing) _____ Date _____



800-591-9372
www.safetymfg.com