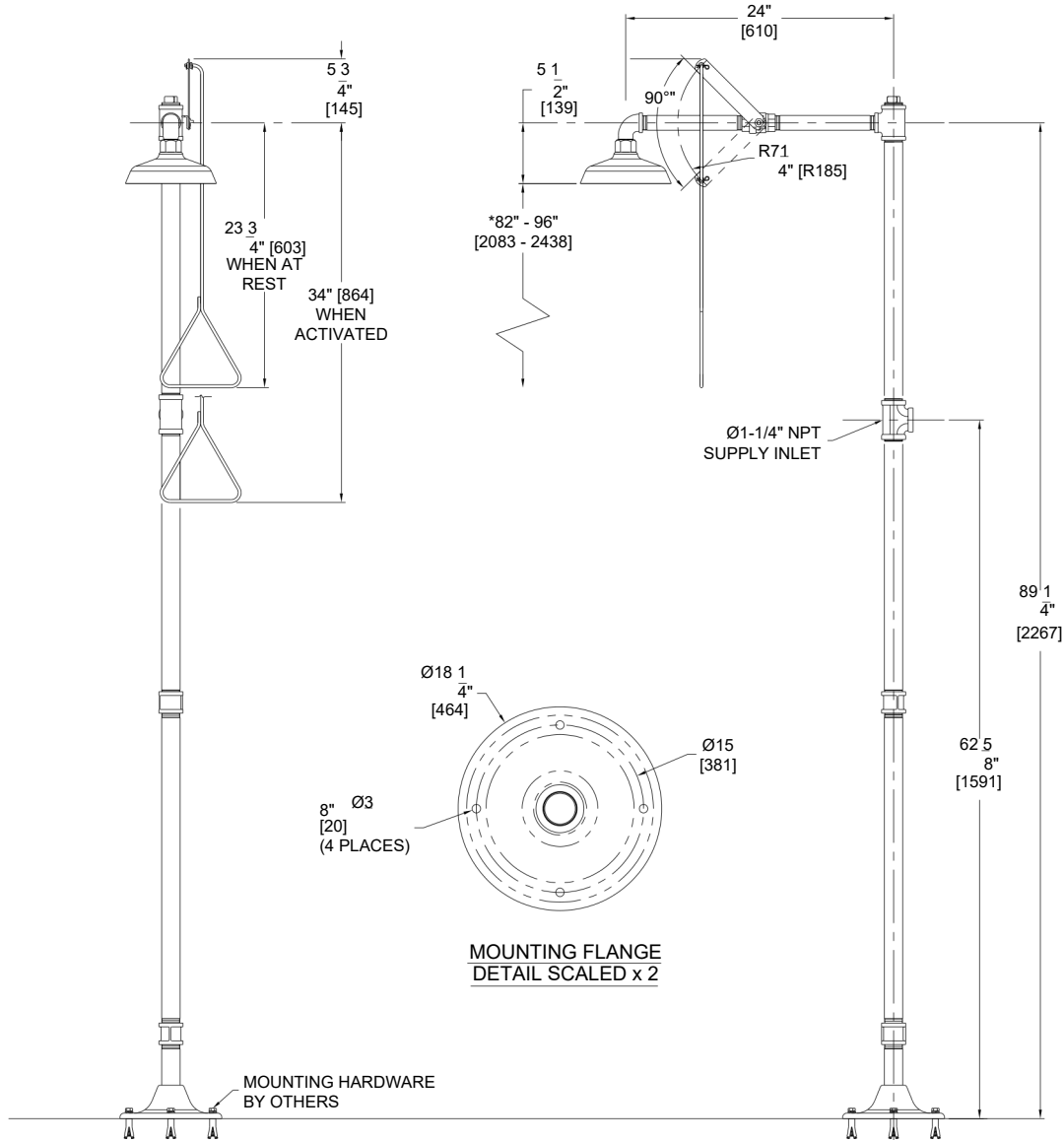


TECHNICAL DIMENSIONS

All dimensions are subject to manufacturer's tolerance of plus or minus 1/2" nominal and subject to change without notice. Safety Manufacturing assumes no responsibility for use of void or superseded data. Dimensions may change with the addition of optional accessories. © SafetyManufacturing, A Morris Group International Brand. Please visit www.safetymfg.com for most current specifications.

Model S2300 : Pedestal Mounted Emergency Shower, Stainless Steel Showerhead



GENERAL NOTES: (ANSI Z358.1 STATEMENTS PROVIDED AS REFERENCE ONLY AND SUBJECT TO CHANGE.)

1. ALL DIMENSIONS ARE IN INCHES [MM].
- *2. ANSI Z358.1 REQUIRES THE SHOWER HEAD TO BE MOUNTED BETWEEN 82" - 96" [2083 - 2438] ABOVE THE FINISHED FLOOR WITH A 16" [406] MINIMUM RADIUS UNOBSTRUCTED.
3. ANSI Z358.1 REQUIRES PULL ROD TO BE MOUNTED NO MORE THAN 69" [1752] FROM THE THE FINISHED FLOOR.
4. ANSI Z358.1 REQUIRES SUPPLY WORKING PRESSURE OF 30 PSI TO 80 PSI.

⚠ WARNING: Cancer and Reproductive Harm - www.P65Warnings.ca.gov

S2300 REV: 11/01/2024

SELECTION SUMMARY
& APPROVAL FOR
MANUFACTURING

Model Number & Options _____	Quantity _____
Company _____	
Contact _____	Title _____
Signature (Approval for Manufacturing)	Date _____



800-591-9372
www.safetymfg.com