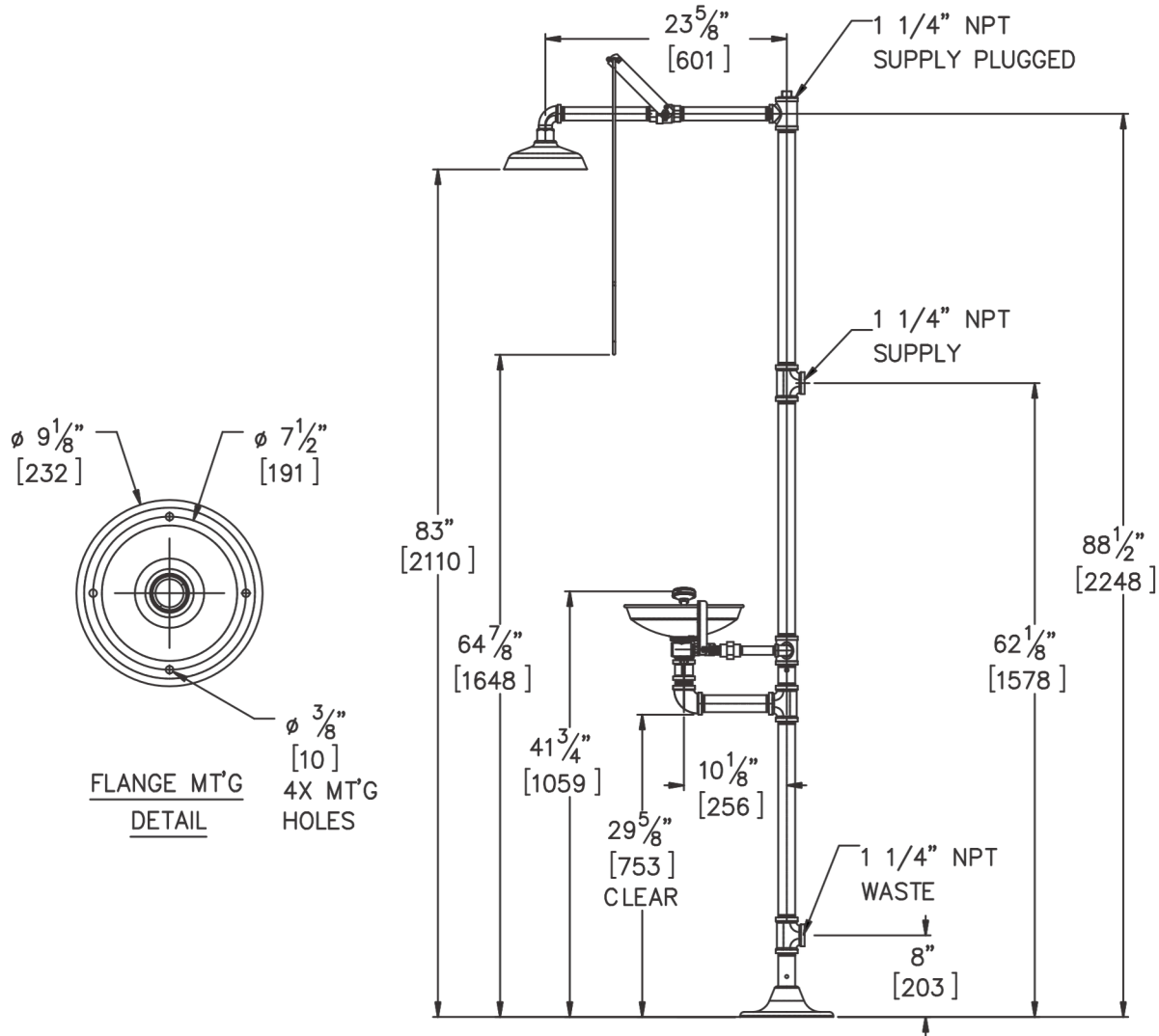


## TECHNICAL DIMENSIONS

All dimensions are subject to manufacturer's tolerance of plus or minus 1/2" nominal and subject to change without notice. Safety Manufacturing assumes no responsibility for use of void or superseded data. Dimensions may change with the addition of optional accessories. © SafetyManufacturing, A Morris Group International Brand. Please visit [www.safetymfg.com](http://www.safetymfg.com) for most current specifications.

### Model S2340 : Combination Station, Stainless Steel Bowl Eye/Face Wash and Showerhead



GENERAL NOTES: (ANSI Z358.1 STATEMENTS PROVIDED AS REFERENCE ONLY AND SUBJECT TO CHANGE.)

1. ALL DIMENSIONS ARE IN INCHES [MM].

\*2. ANSI Z358.1 REQUIRES NOZZLES TO BE BETWEEN 33" - 45" [838 - 1143] ABOVE THE FINISHED FLOOR.

\*\*3. ANSI Z358.1 REQUIRES THE SHOWER HEAD TO BE MOUNTED BETWEEN 82" - 96" [2083 - 2438] ABOVE THE FINISHED FLOOR WITH A 16" [406] MINIMUM RADIUS UNOBSTRUCTED.

4. ANSI Z358.1 REQUIRES PULL ROD TO BE MOUNTED NO MORE THAN 69" [1752] FROM THE FINISHED FLOOR.

5. ANSI Z358.1 REQUIRES SUPPLY WORKING PRESSURE OF 30 PSI TO 80 PSI.

 WARNING: Cancer and Reproductive Harm - [www.P65Warnings.ca.gov](http://www.P65Warnings.ca.gov)

**S2340** REV: 11/11/2024

SELECTION SUMMARY  
& APPROVAL FOR  
MANUFACTURING

Model Number & Options \_\_\_\_\_ Quantity \_\_\_\_\_

Company \_\_\_\_\_

Contact \_\_\_\_\_ Title \_\_\_\_\_

Signature (Approval for Manufacturing) \_\_\_\_\_ Date \_\_\_\_\_



**800-591-9372**  
[www.safetymfg.com](http://www.safetymfg.com)